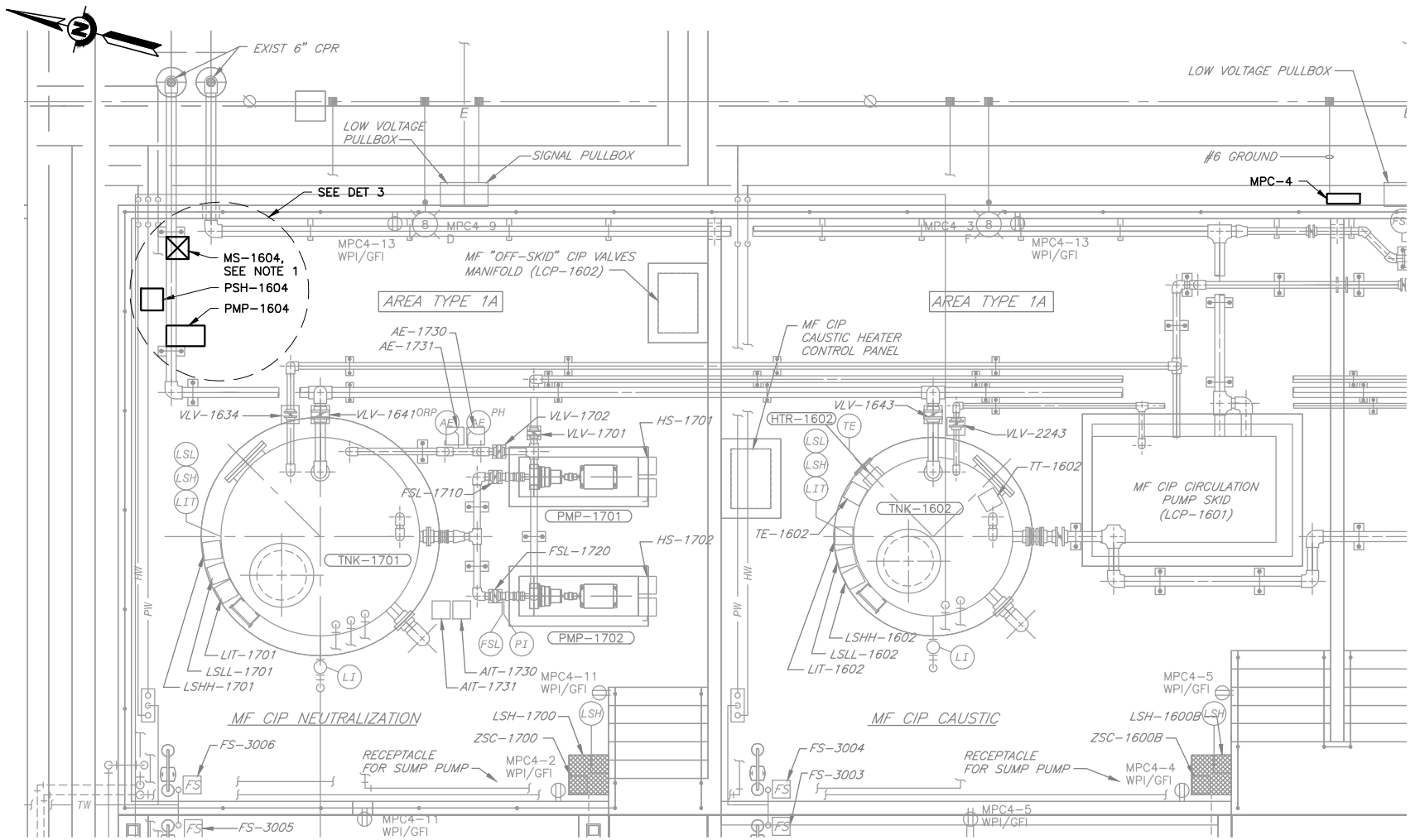
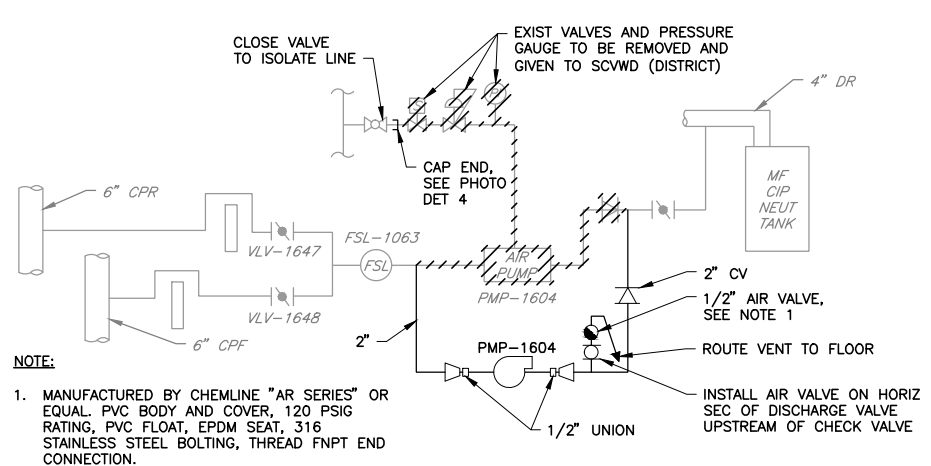


USERNAME: Patreky 12/29/2014 12:54 PM  
 FILENAME: K:\Active Projects\MP-91184008\SWAWPC Potable Water\Sheets\M-04.dwg

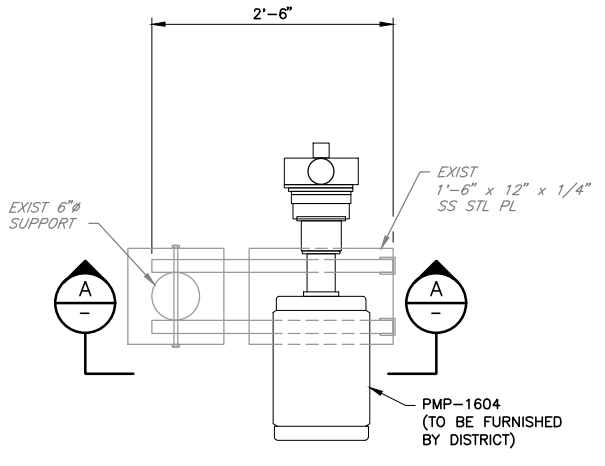


- NOTES:**
- ELECTRIC PUMP MOTOR STARTER MS-1604 SHALL BE LOCATED ADJACENT TO THE PUMP IN AN AVAILABLE FREE AREA MOUNTED ABOVE THE TNK-1701 PAD ELEVATION.
  - SEE SHEET E-3 FOR MOTOR STARTER MS-1604 AND EXISTING PANEL SCHEDULE FOR MPC-4.

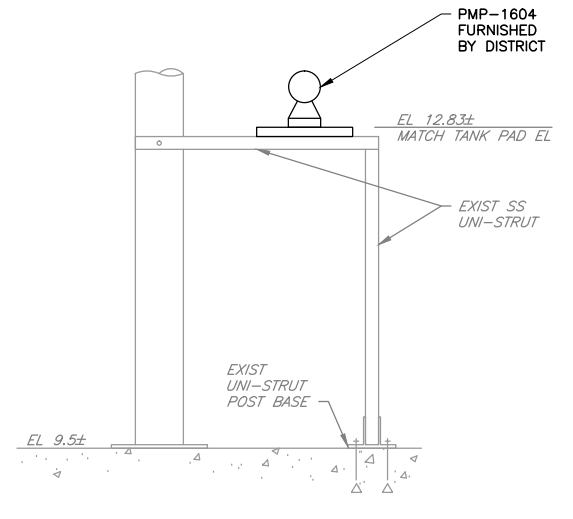
**PLAN**  
 SCALE: 1/4" = 1'-0"



**DETAIL 1** SCHEMATIC OF ELECTRIC DRAIN PUMP INSTALLATION  
 SCALE: NTS



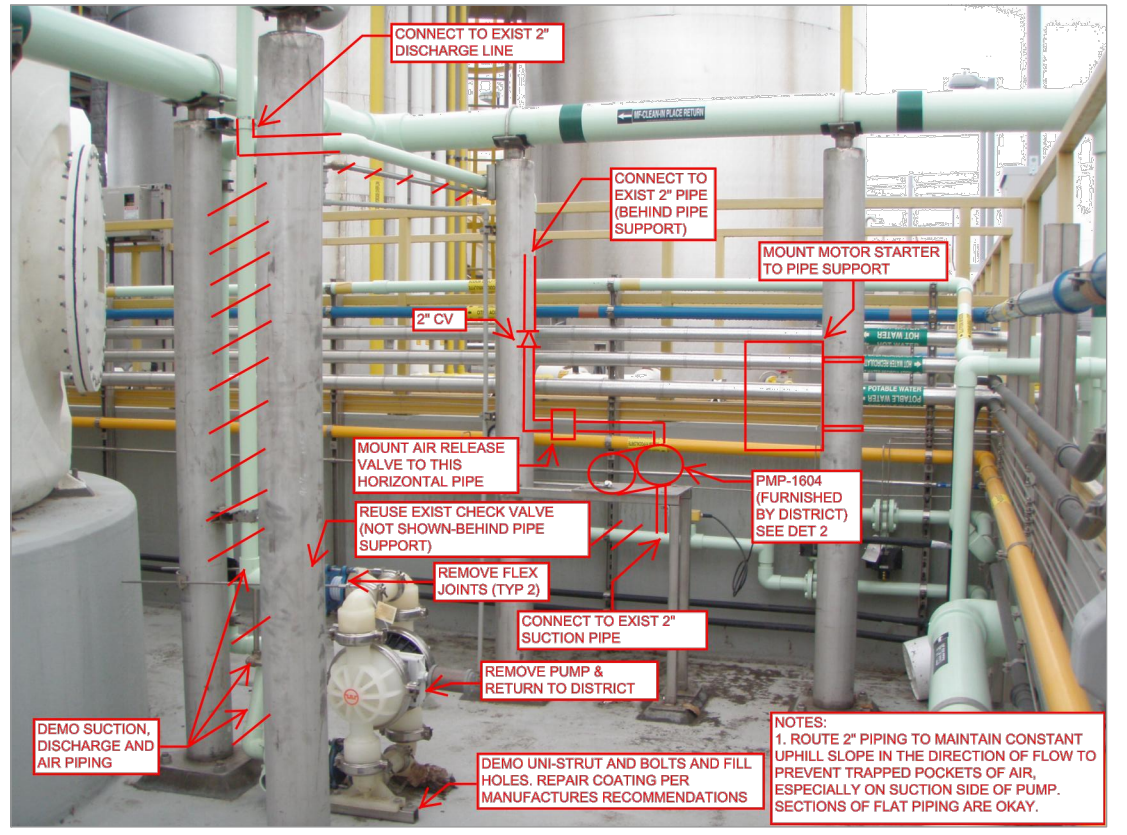
**DETAIL 2** DRAIN PUMP SUPPORT  
 SCALE: NTS



**SECTION A**  
 SCALE: NTS



**DETAIL 4** EXISTING VALVES AND PRESSURE GAUGE  
 SCALE: NTS



**DETAIL 3** ELECTRICAL DRAIN PUMP INSTALLATION  
 SCALE: NTS

DOCUMENT NUMBER: PAW-M-9118-52732

REV	DESCRIPTION	DATE	APPR	REFERENCE INFORMATION AND NOTES

DATE SEPT 2014	ENGINEERING CERTIFICATION
DESIGN A. MASIC B. PONCE	
DRAWN D. BICKFORD	
CHECKED C. MAI	
PROJECT ENGINEER	DATE

**Santa Clara Valley Water District**

PROJECT NAME AND SHEET DESCRIPTION:  
**SVAWPC POTABLE WATER LINE**  
**ELECTRICAL DRAIN PUMP AT MF CIP AND SODIUM HYDROXIDE FACILITIES**

SCALE AS SHOWN	PROJECT NUMBER 91184008
VERIFY SCALES 0 1" BAR IS ONE INCH ON ORIGINAL DRAWING IF NOT ONE INCH ON THIS SHEET, ADJUST SCALES ACCORDINGLY	SHEET CODE: <b>M-4</b>
	SHEET NUMBER: 21 OF 36