

Upper Berryessa Creek Construction Activities for 2016-2017 September 12, 2016

Robin Liffmann
Project Manager
San Francisco District, USACE



Santa Clara Valley
Water District



US Army Corps of Engineers
BUILDING STRONG®



Purpose

- 1) Present the Construction project for Berryessa Creek
- 2) Project Schedule
- 3) Expected impacts to community
- 4) Contact information



Agenda

- Introductions
- Background on project
- Project intent/benefits
- Project limits
- Key features of construction
- Timing of construction
- What public can expect
- Question/Answers

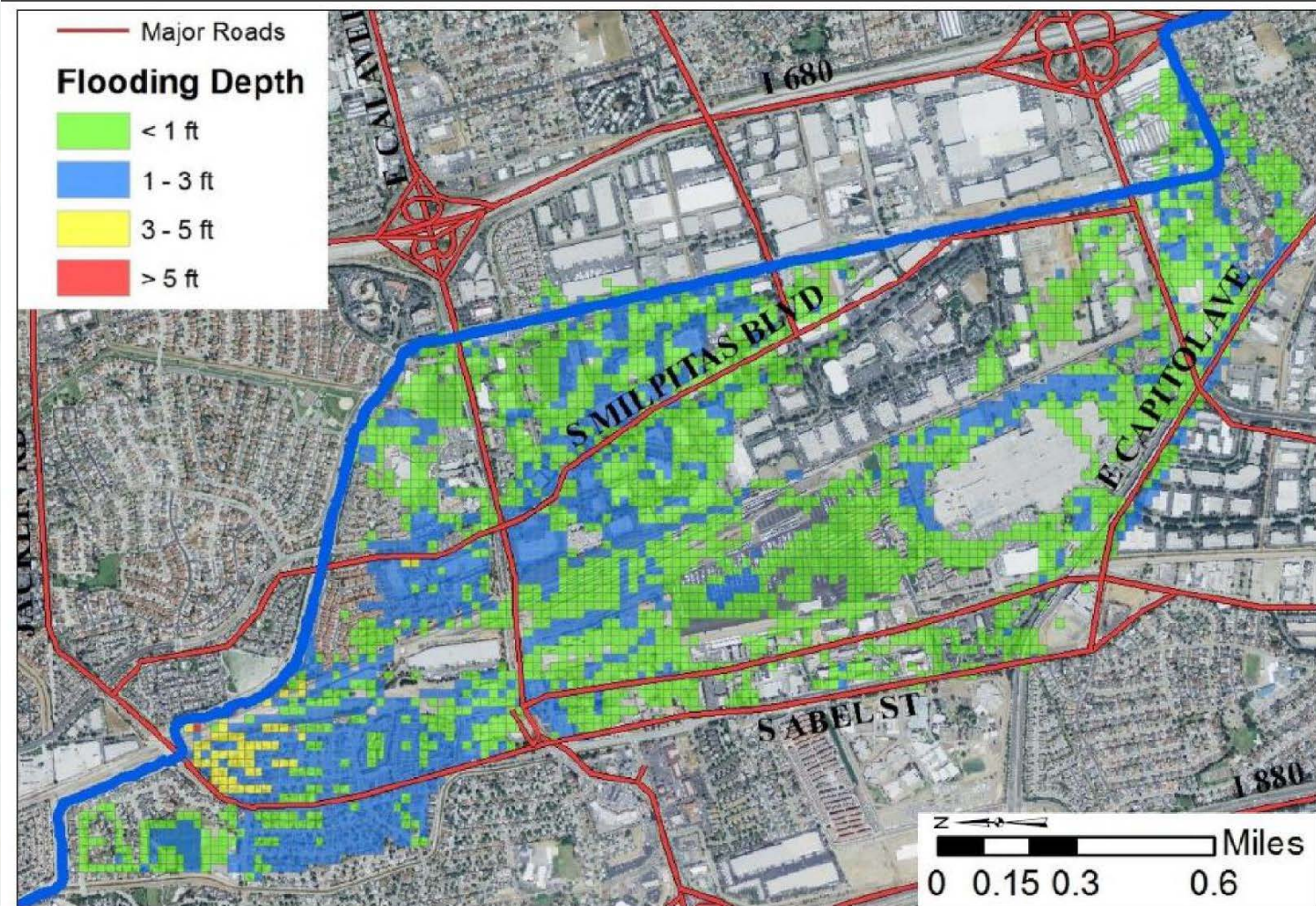


Background on Project

- Authorized by Congress in 1990
- Berryessa Creek Project is a single-purpose flood risk management project
- The General Re-evaluation Report with integrated Environmental Impact Statement (GRR/EIS) approved 5/2014
- Completed design in 7/2016
- Awarded construction contract 8/2016

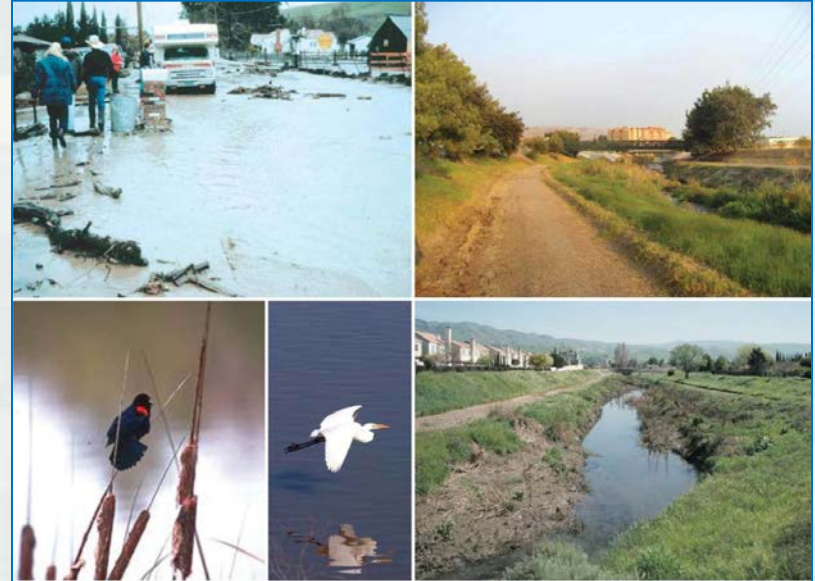


Existing Flood Hazard

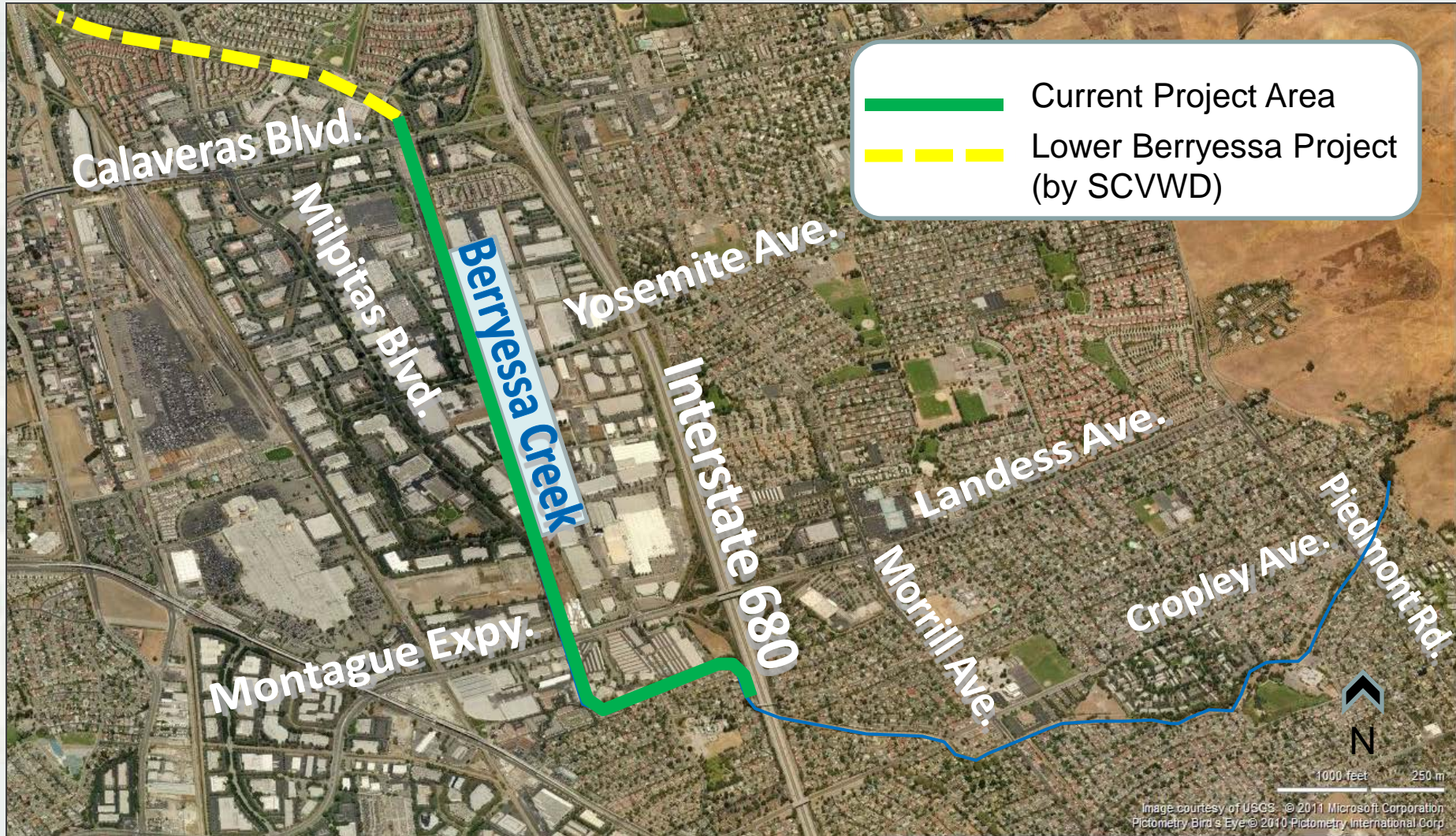


Project Intent/Benefits

- Provides flood protection for homes, businesses, future BART service and neighboring communities
- Improves maintenance access to Lower Berryessa Creek for water district staff
- Replace invasive vegetation with native species and wetland vegetation in the bottom of the sideslope



Project Limits



Channel Area Changes



Photo-simulation Union Pacific Railroad Trestle Replacement



Photo-simulation Upstream of Montague Expressway



Bank Stabilization



**Berryessa Creek
Bank Erosion**



Environmental Setting and Potential Effects

- Existing project area has minimal, low quality vegetation within creek
- Short term and temporary effects to biological resources, noise, and traffic
- Use best management practices and mitigation measures to avoid and minimize effects



Key Features of Construction

- Trapezoidal channel
- Bank stabilization
- Floodwalls
- UPRR bridge replacement
- Access roads
- Utility relocations



Timing of Construction

- 2016 Construction will start Oct 3 until Oct 30, 2016
- 2017 work will start in March, 2017
- 2016 Work to include:
 - Completing the lay-down yard off of Pectin Court
 - Tree limb trimming
 - Clearing, hauling, construction and hydro-seed of approx. 500 linear feet of channel improvements



What to Expect During Construction

- Weekday and Saturday work hours: 7 a.m. to 7 p.m.
 - ▶ Within 500 feet of residential units: Monday – Friday only
- Heavy equipment
- Traffic control
- Biological surveys
- Dust, vibration and noise control



What Public Can Expect in 2016

- Construction equipment delivered via Pectin Court
- The entire site for 2016 will be accessed through Pectin Court
- Small stockpiles at Pectin Court
- Construction equipment with diesel engines running 8 hours a day from October 3 – 30, 2016.



Contact Information

- **USACE:**

Robin Liffmann, Project Manager

Robin.J.Liffmann@usace.army.mil

(415) 503-6532

- **SCVWD:**

Javier Valencia, Project Manager

jvalencia@valleywater.org

(408) 630-2963



Q & A

- Now, we'll take some clarifying questions.
 - Please wait to be called
 - Limit speaking to 3 minutes
- Staff will be here after the Q & A session. Feel free to view the posters and ask any questions, and we'll try to help.
- If you'd like to depart, we want to thank you for your attendance.

